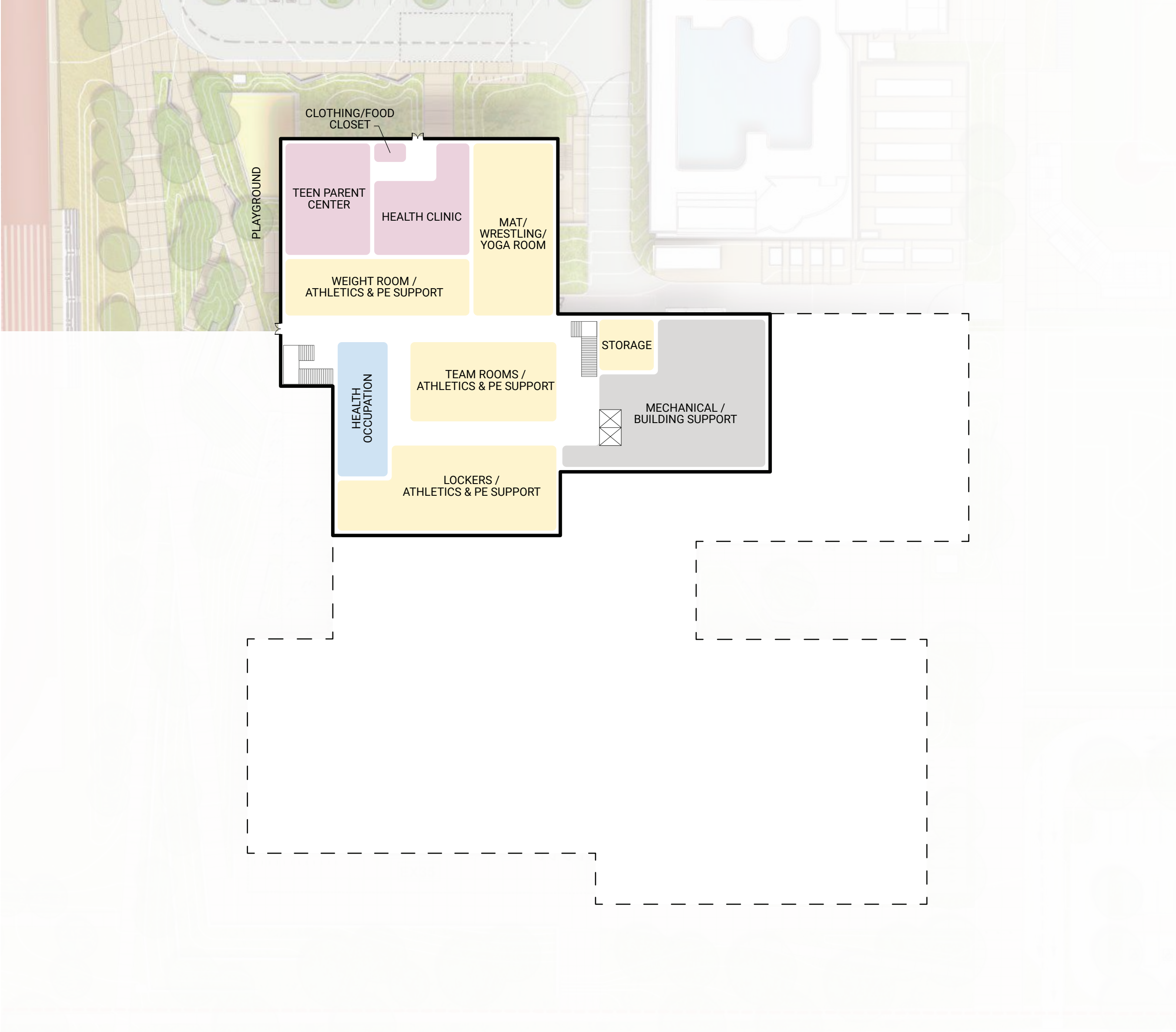
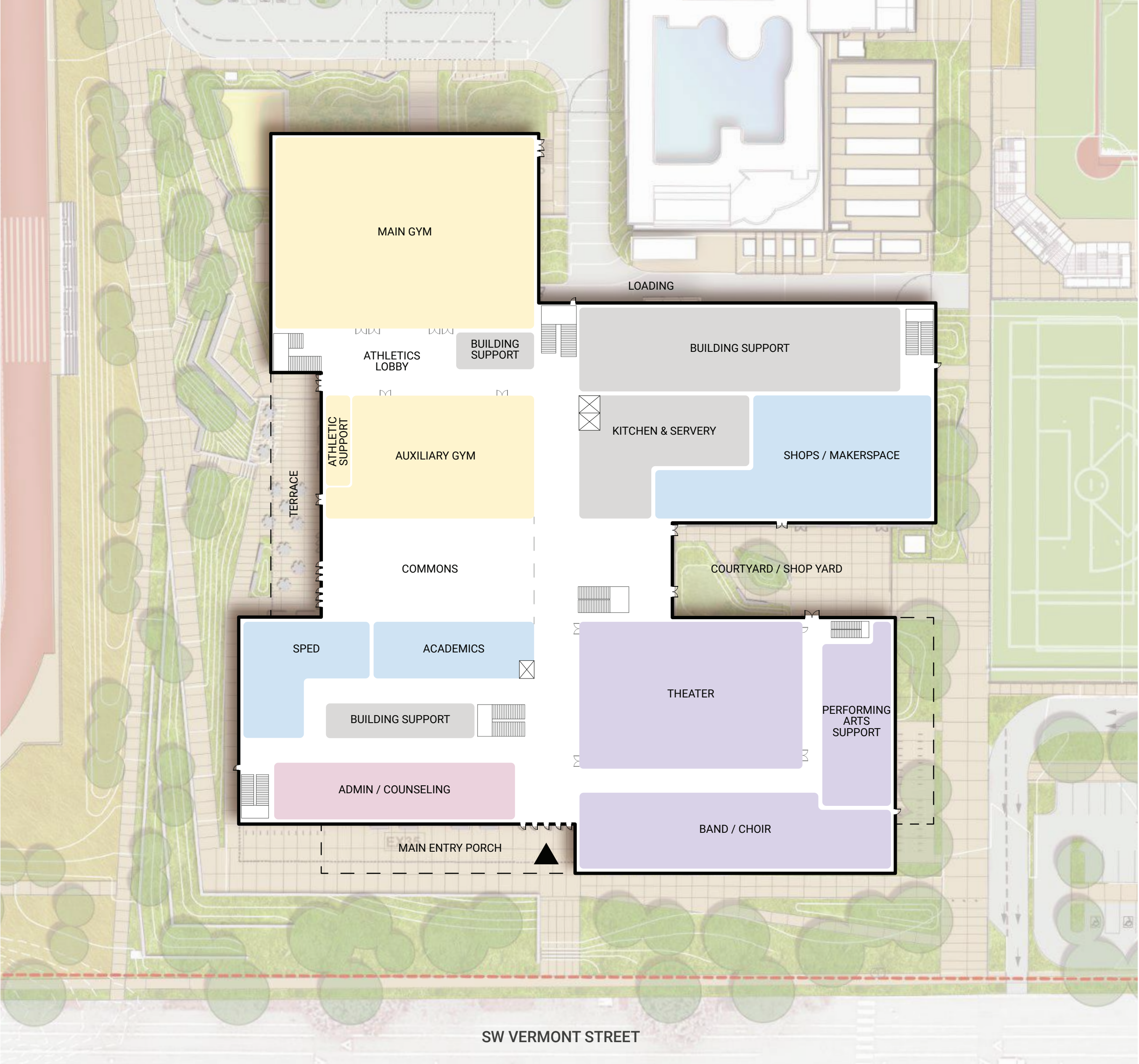


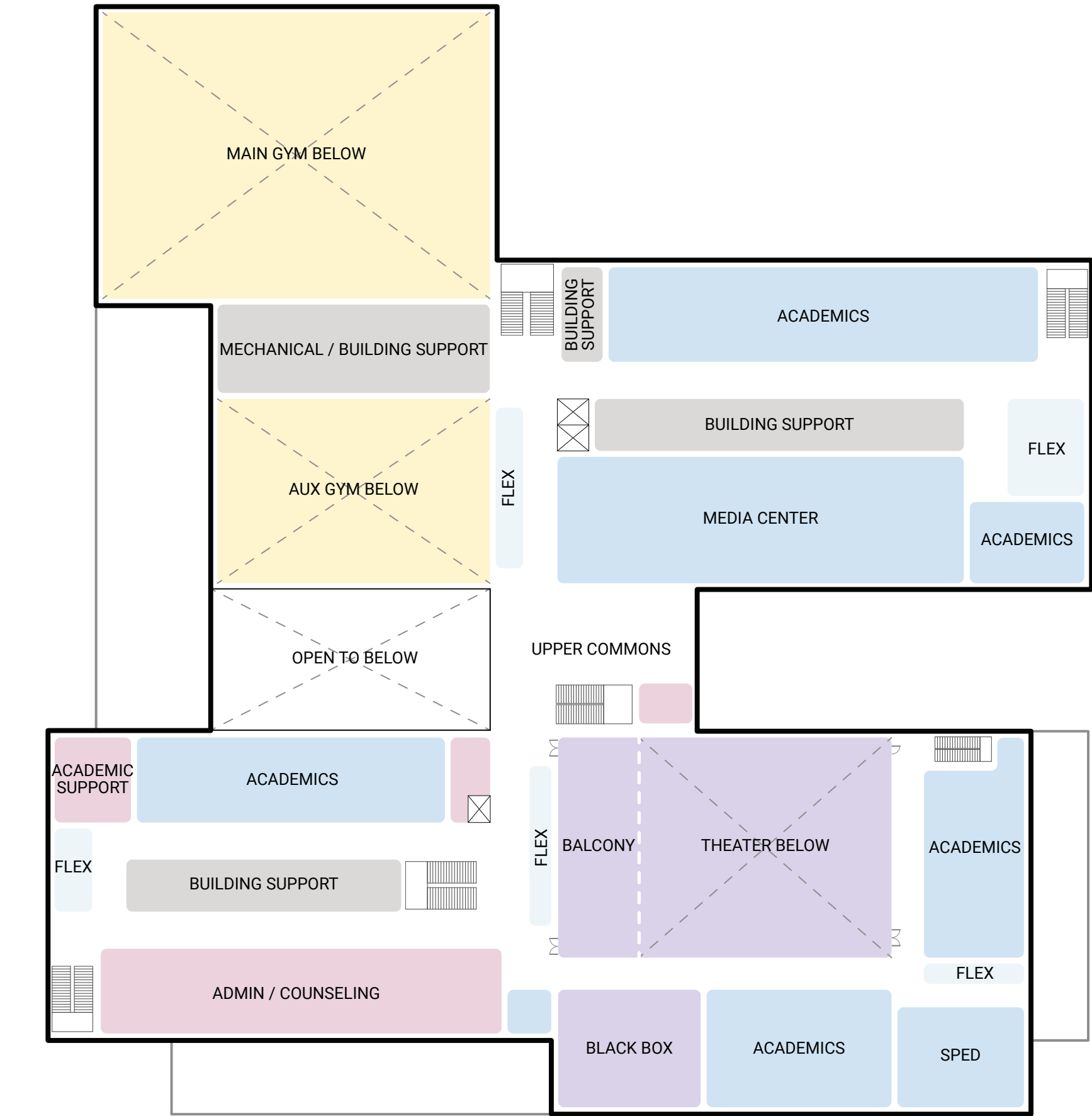
FLOOR PLANS



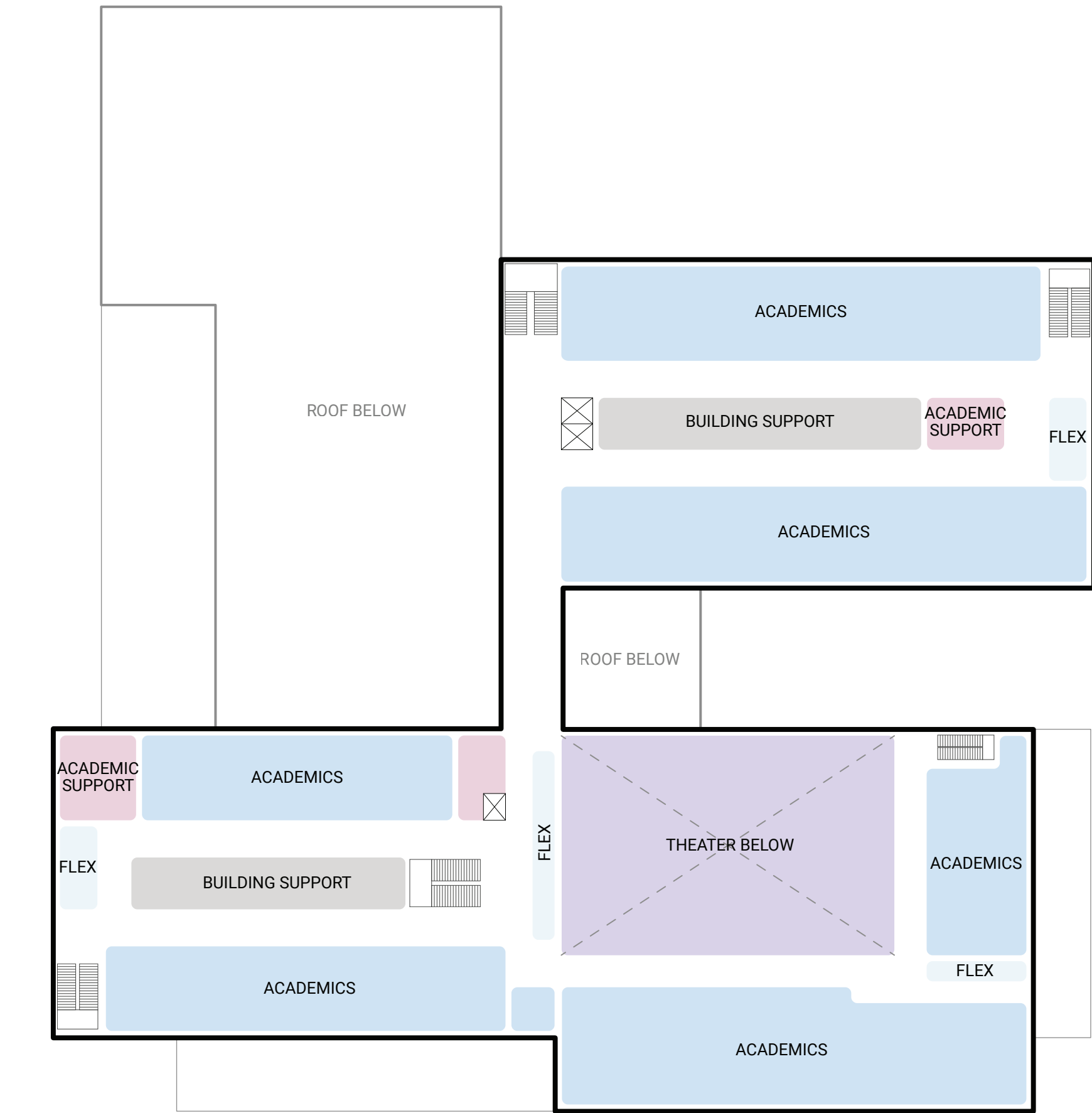
BASEMENT



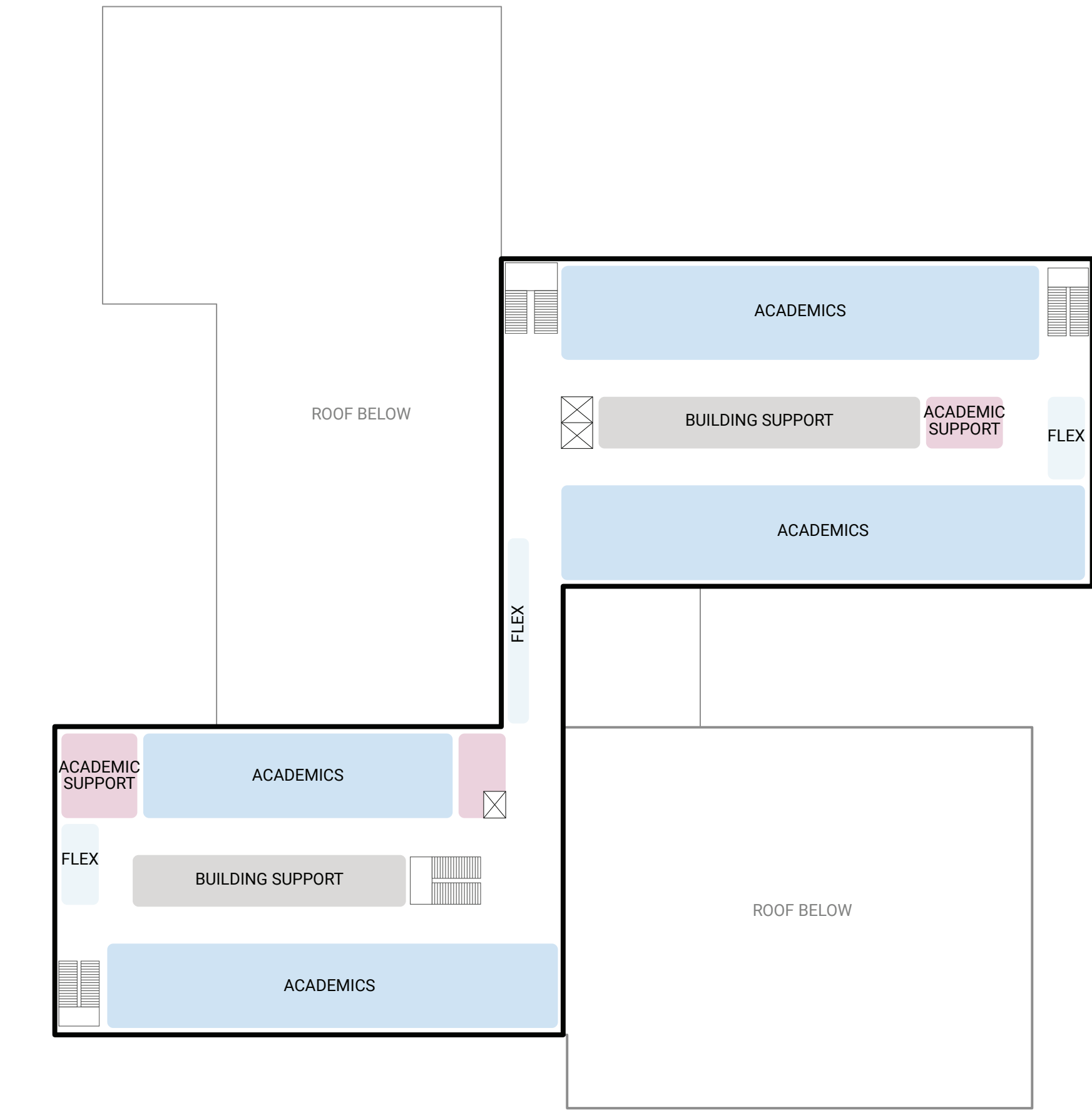
1ST FLOOR



2ND FLOOR

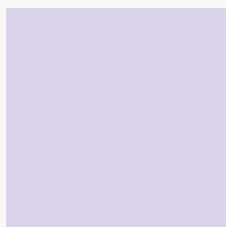
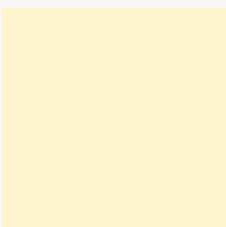

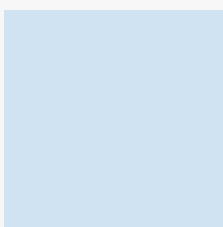
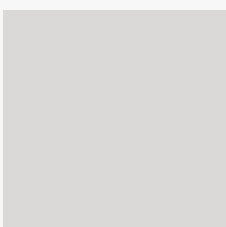


3RD FLOOR

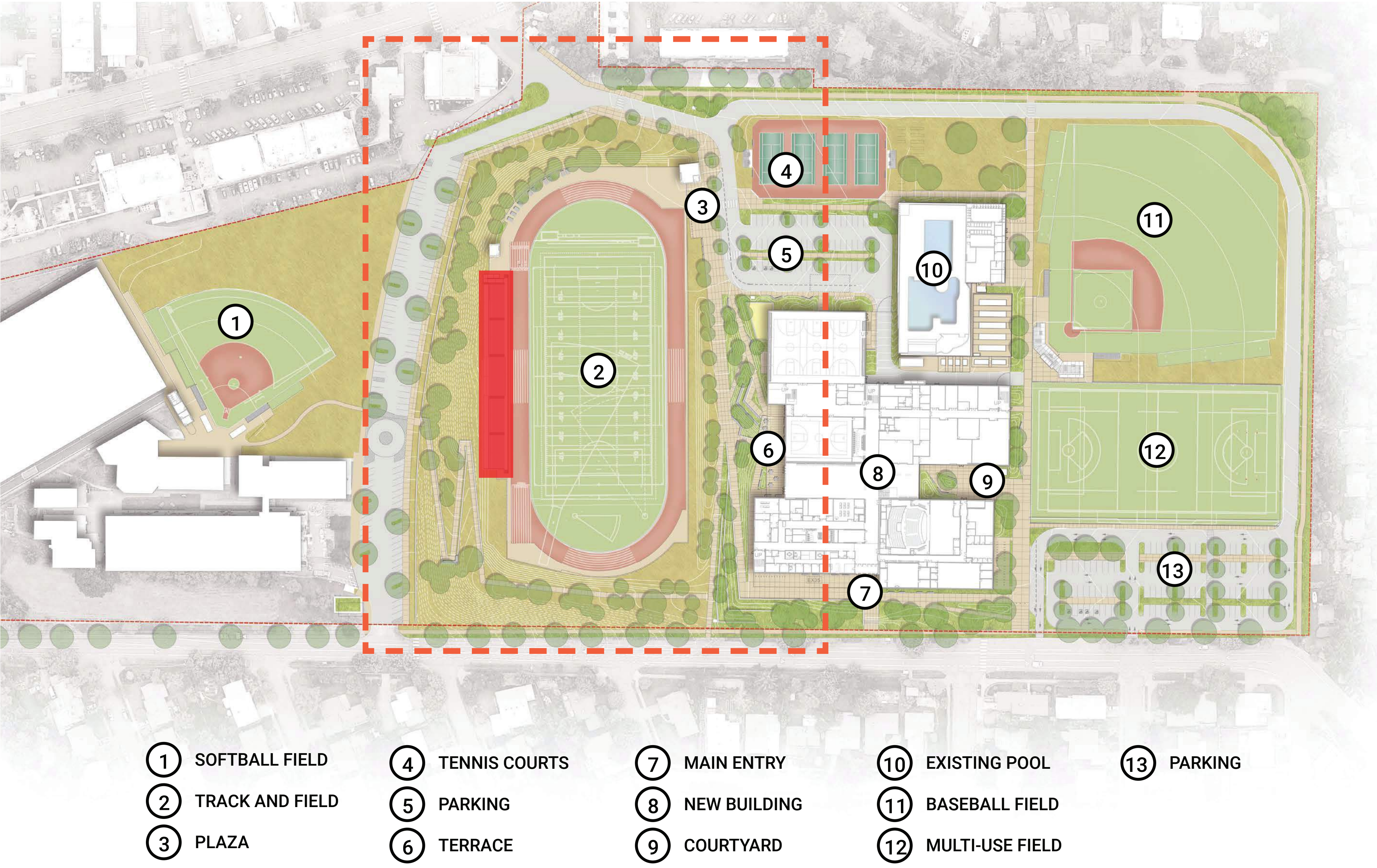


4TH FLOOR

KEY:

	Performing Arts related spaces		Athletics related spaces		Administration and Partners related program and spaces
	Academic related spaces		Building support spaces		

SITE PLAN - GRANDSTAND WEST OPTION

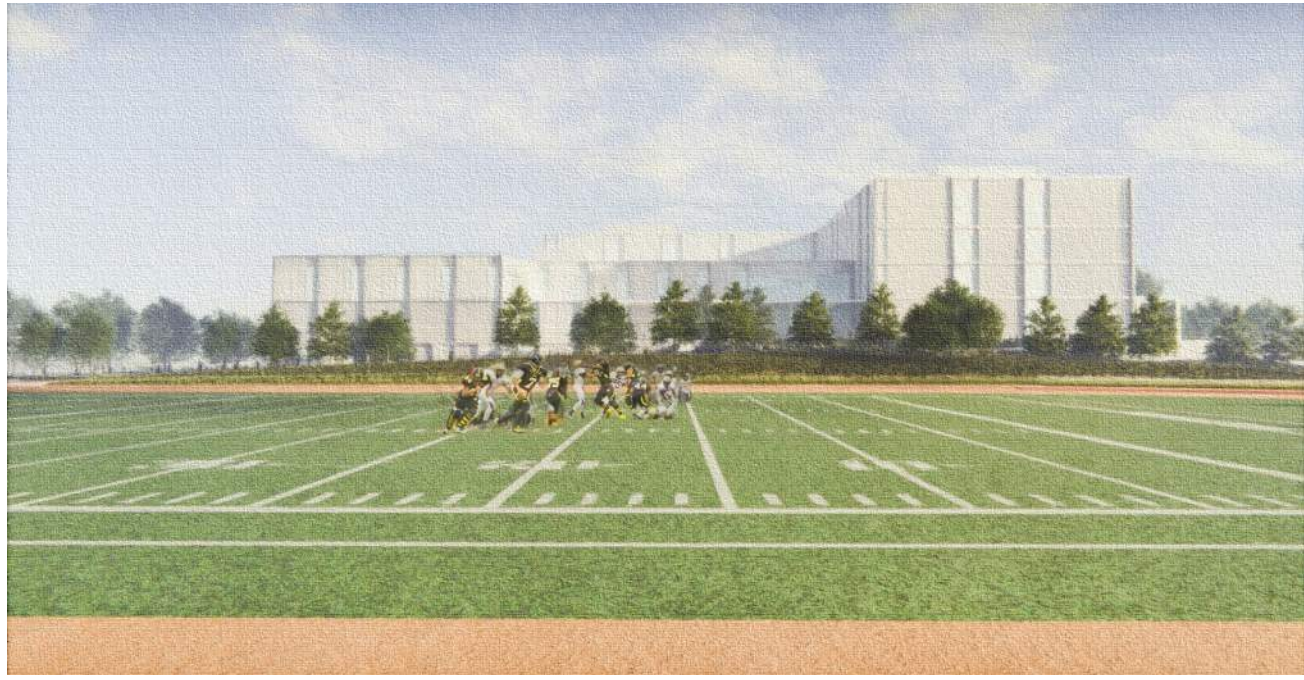
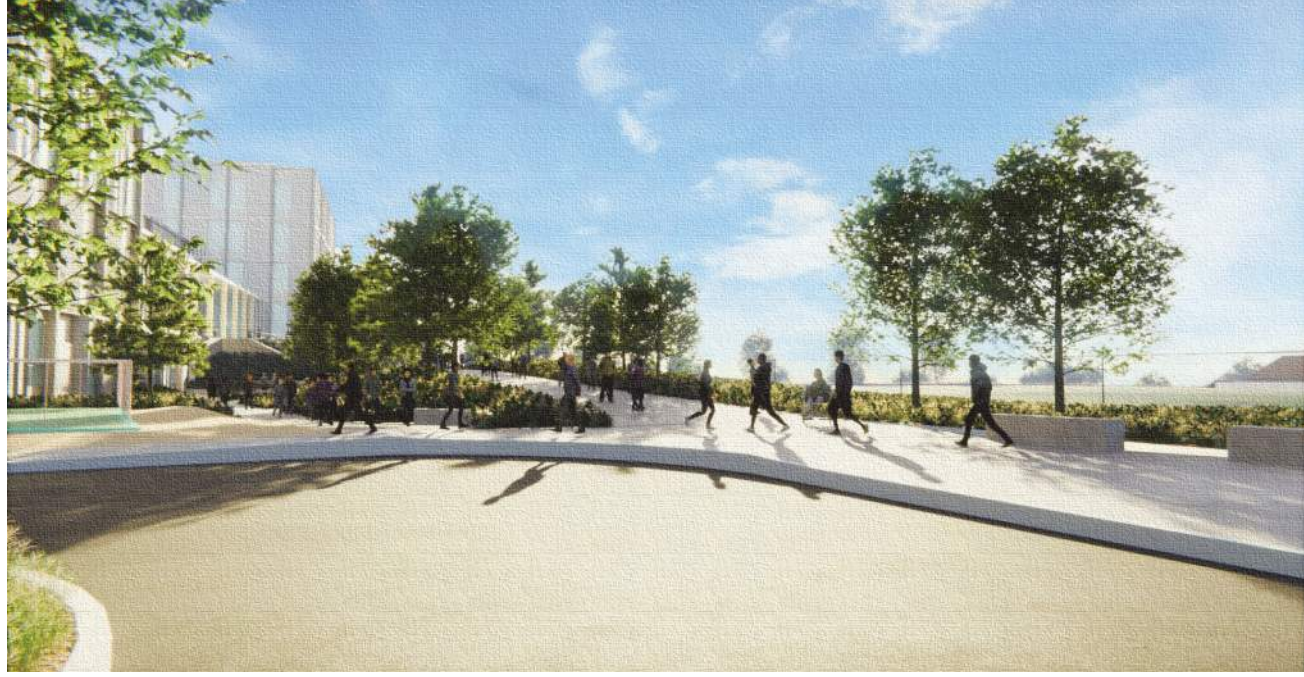


PROS

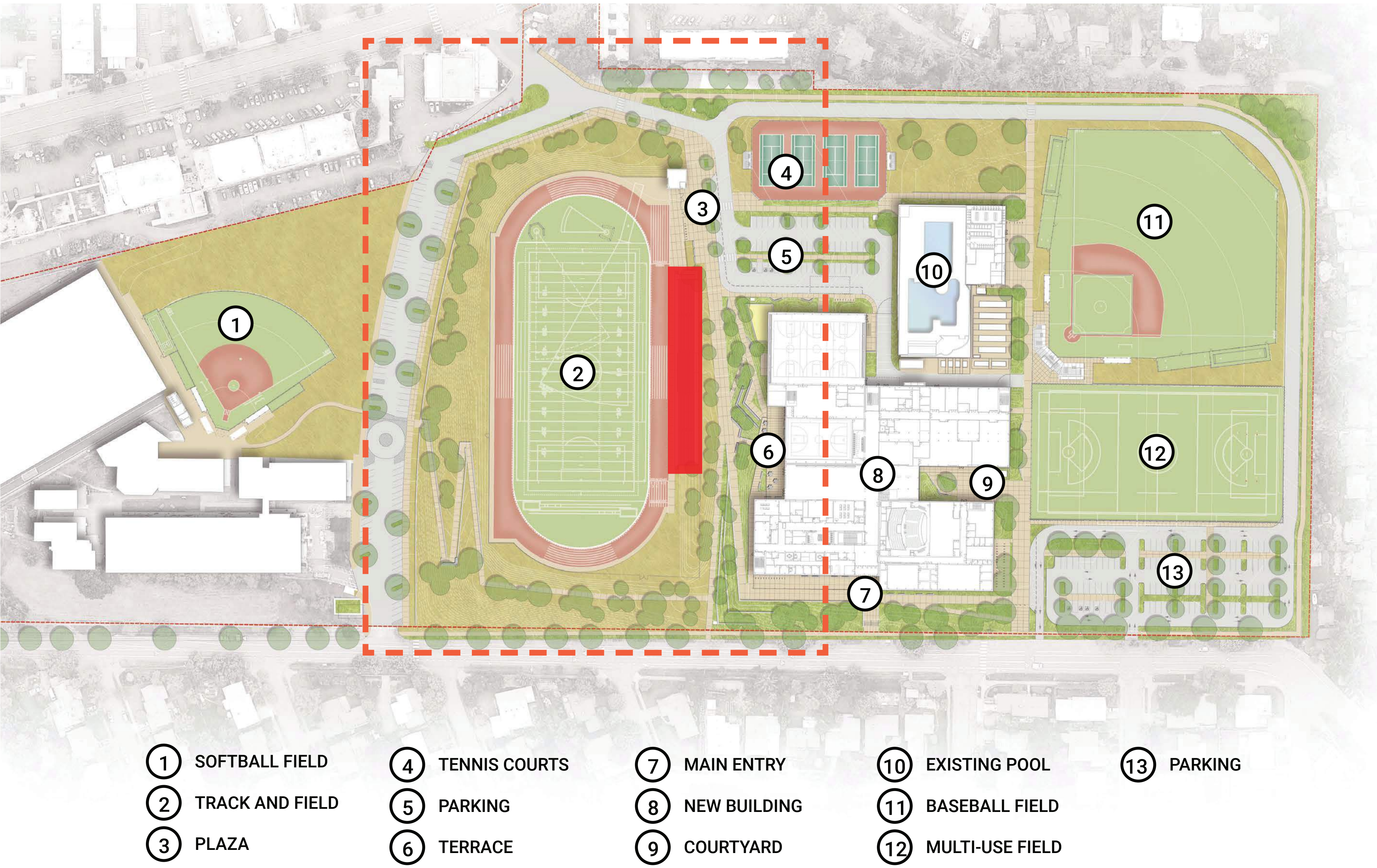
- Open view to fields
- Gathering and programmable spaces along the path to the stands
- Not looking at the sun

CONS

- Longer walk to stands
- Visual impact on Rieke
- Separation between building and stands
- Geotechnical challenges



SITE PLAN - GRANDSTAND EAST OPTION



PROS

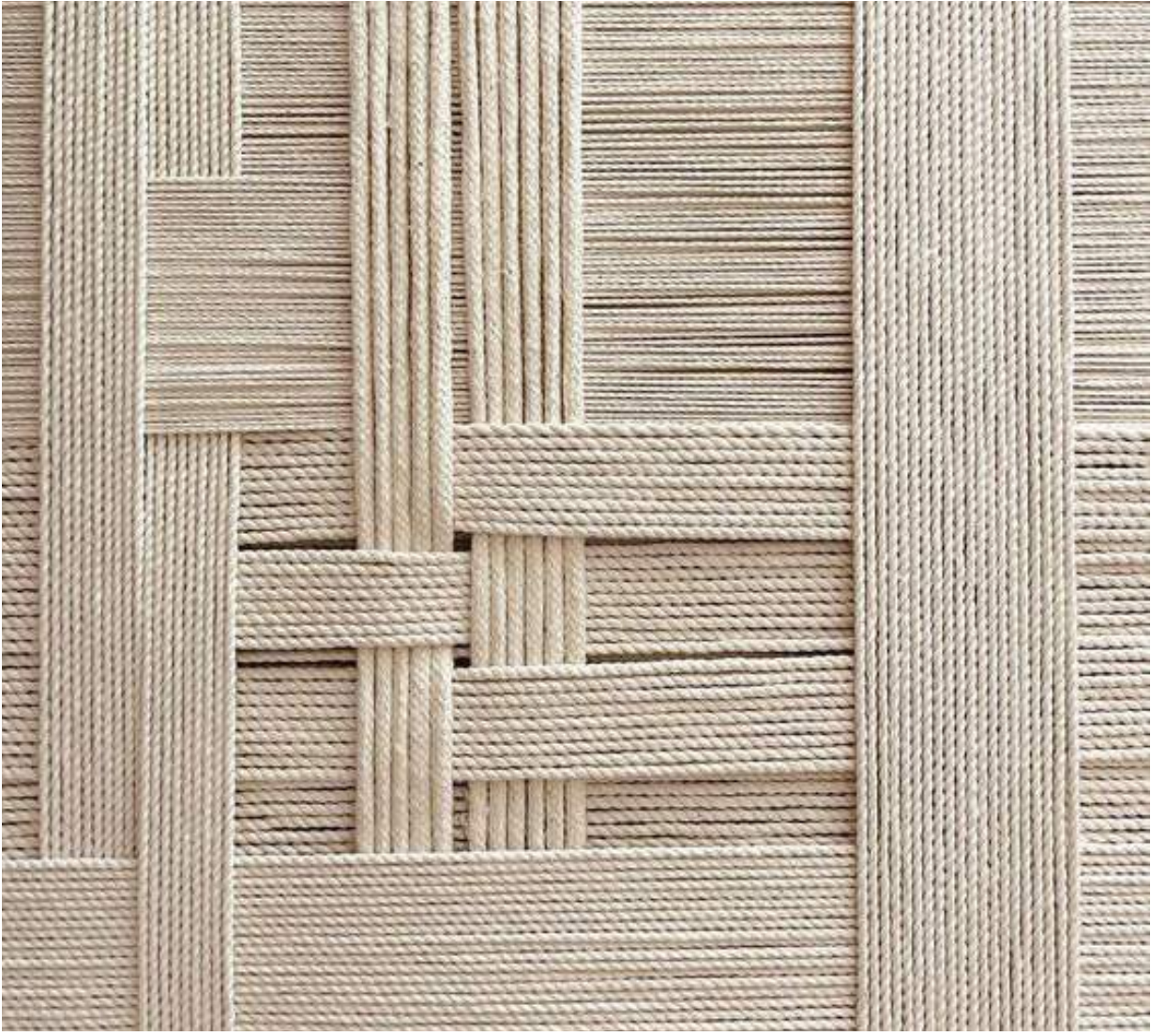
- Centralized
- Short walk
- Larger entry plaza
- Geotechnical advantage

CONS

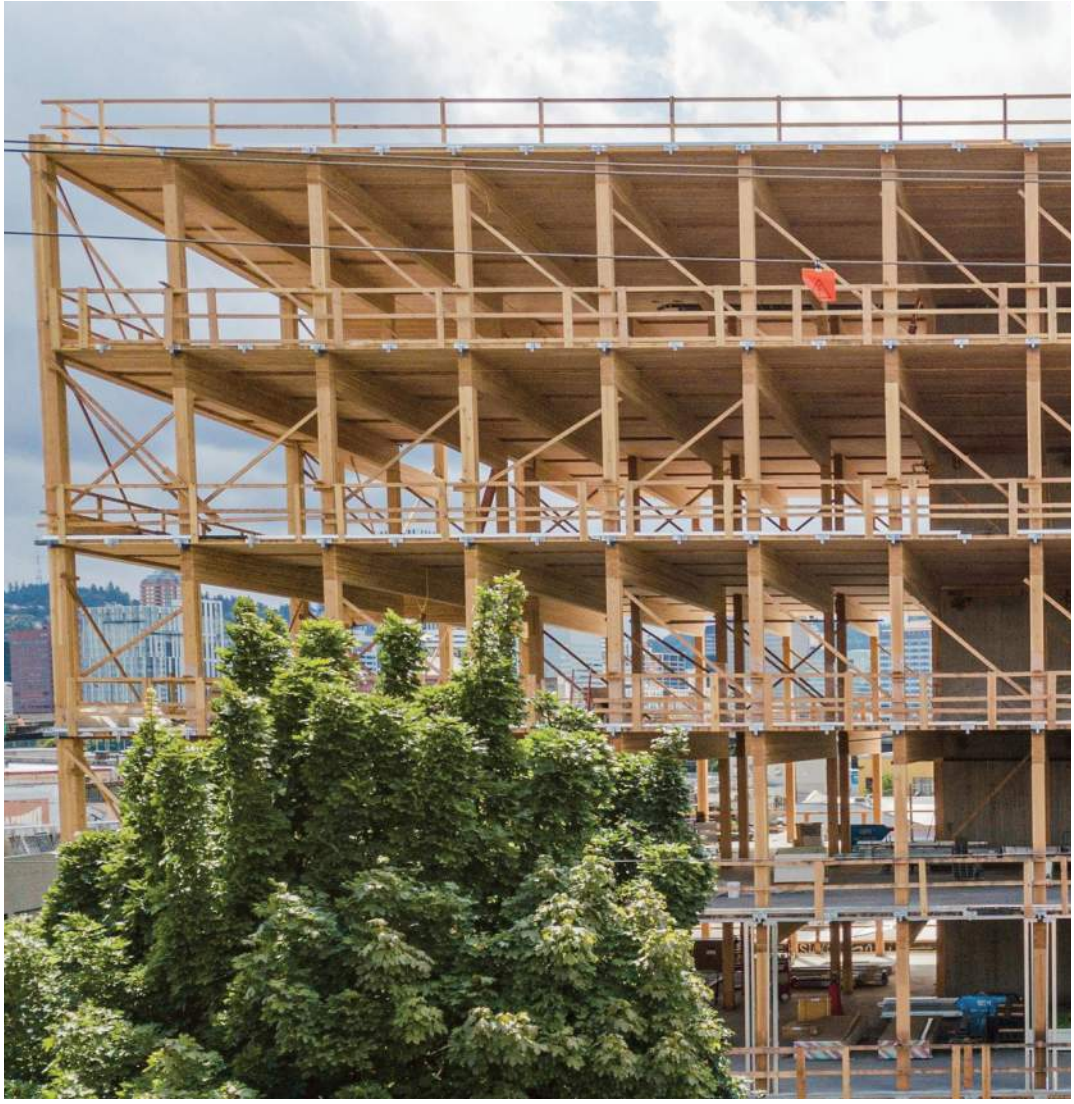
- Impacted view between building and fields
- Sun impacts on spectators
- Shady area between building and stands



FAÇADE INSPIRATION



WEAVING / TAPESTRY



TIMBER STRUCTURE



NATURAL CONTEXT

FAÇADE COLOR STUDIES



DOUGLAS FIR



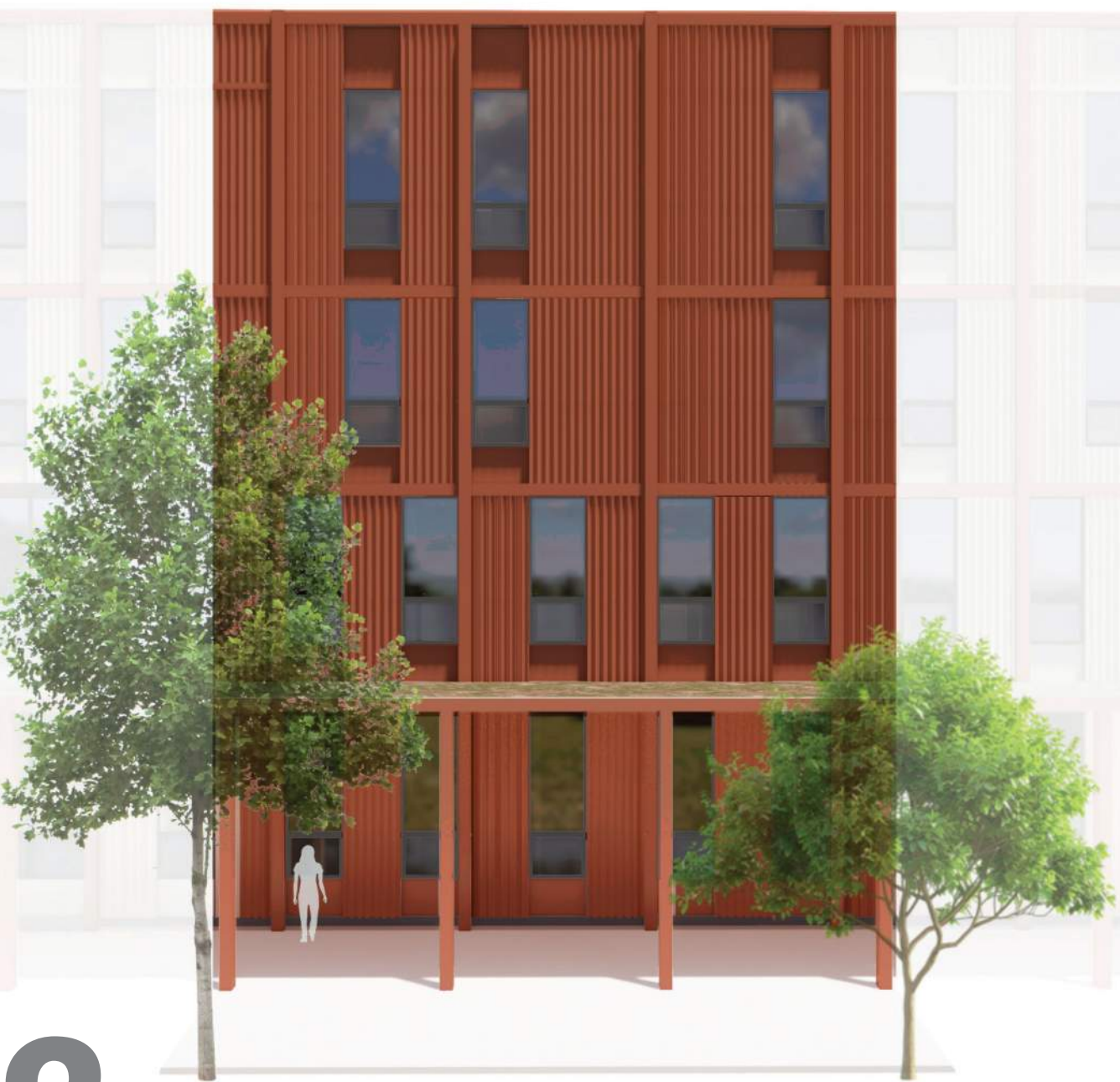
LONDON PLANE



CEDAR



1



2



3



4



5



6

CONCEPTUAL MASSING + FAÇADE



VIEW FROM SOUTH WEST (VERMONT ST.)



VIEW OF WEST ELEVATION

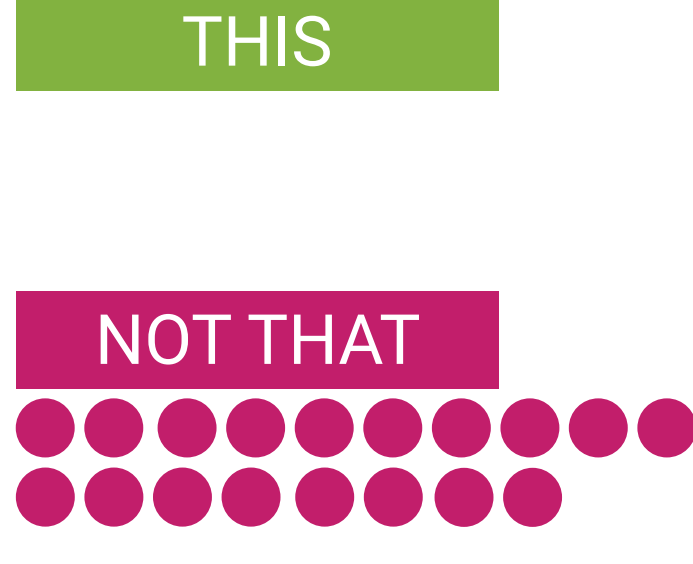
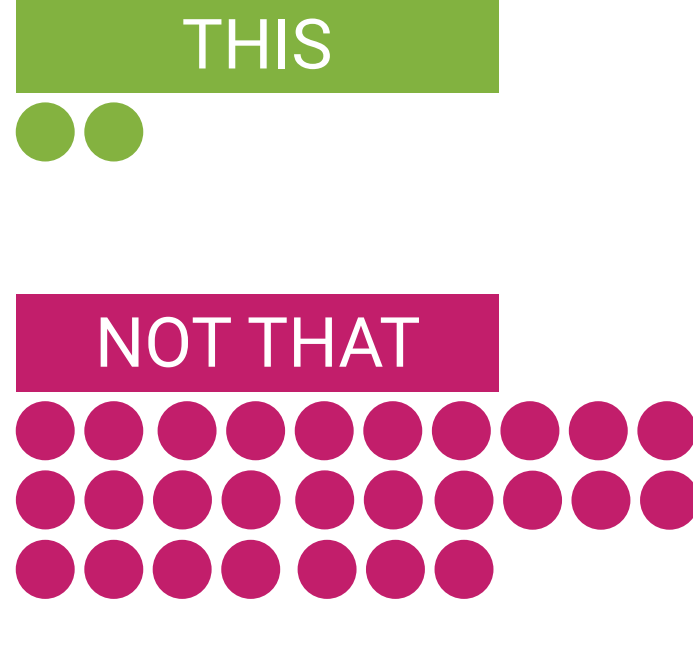
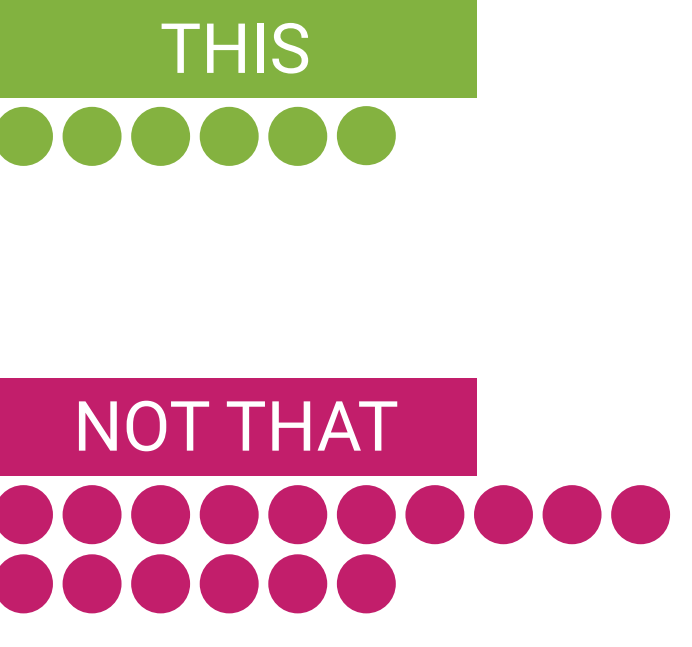
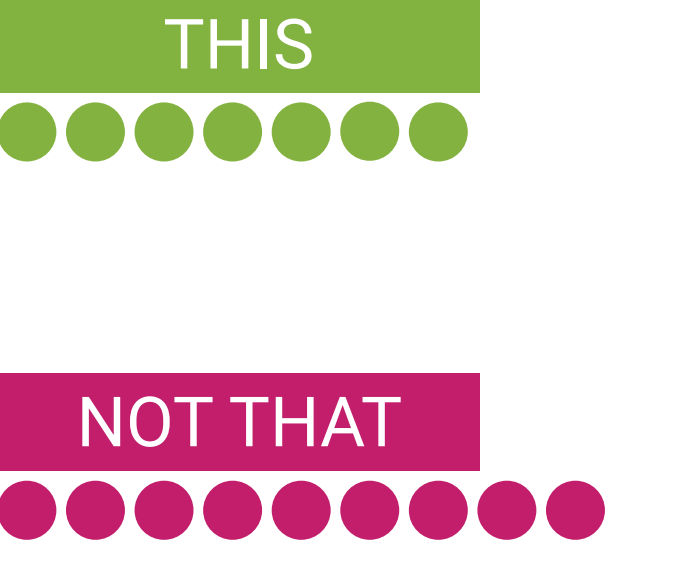
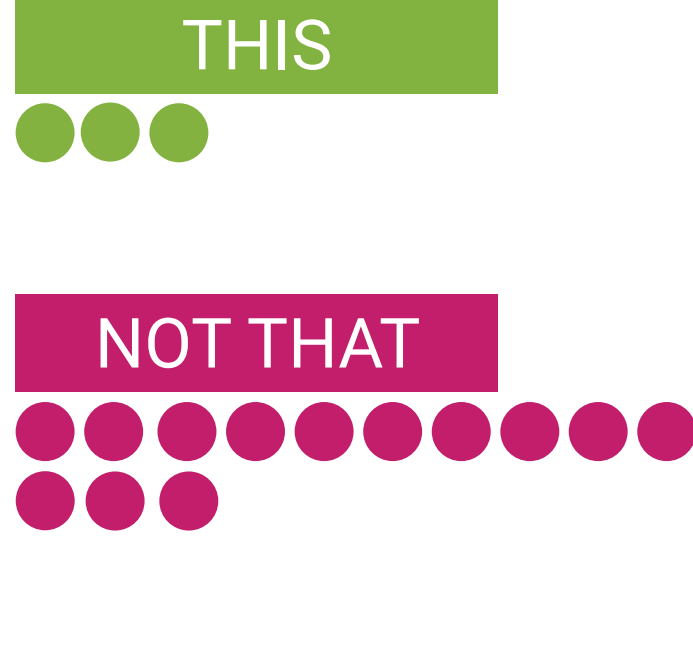
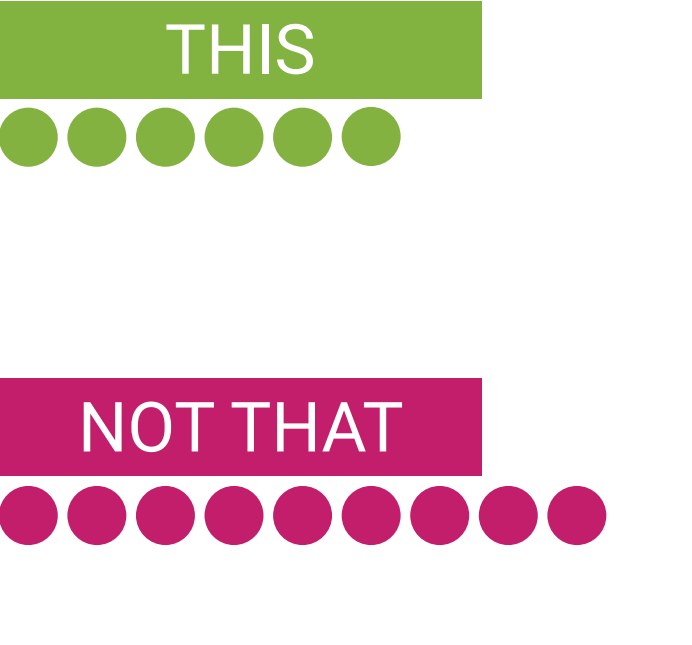
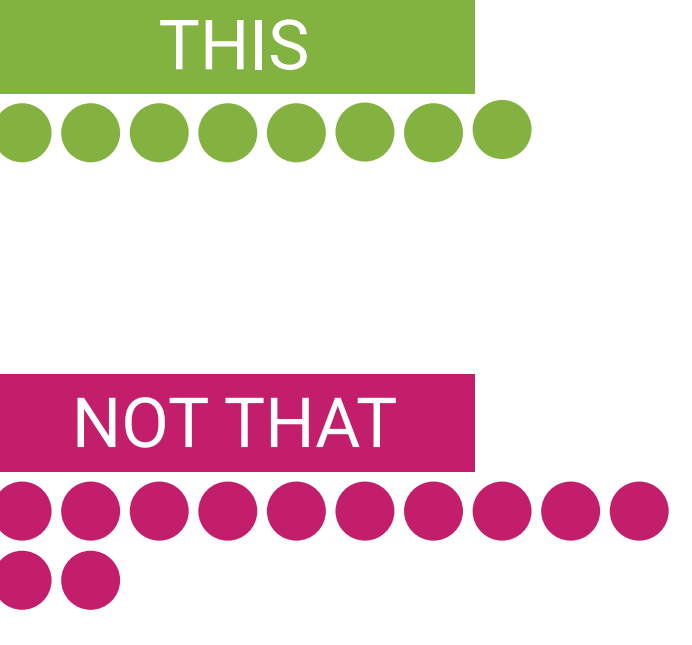
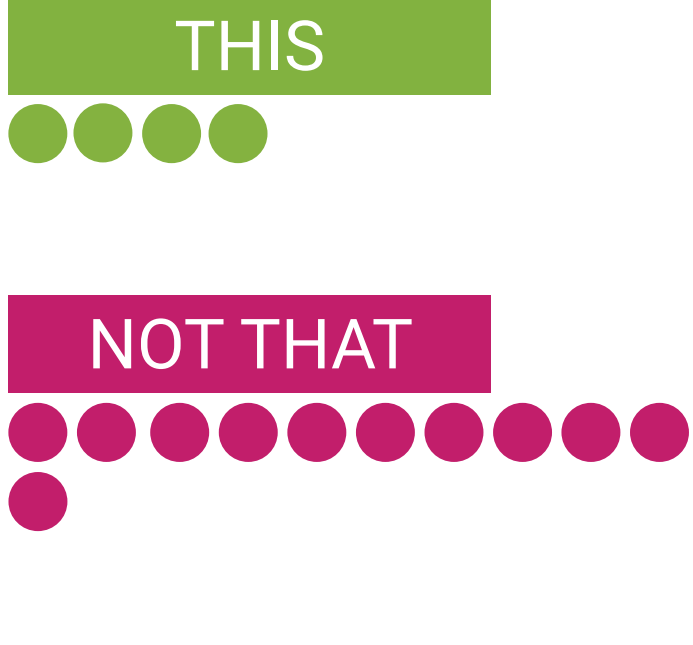
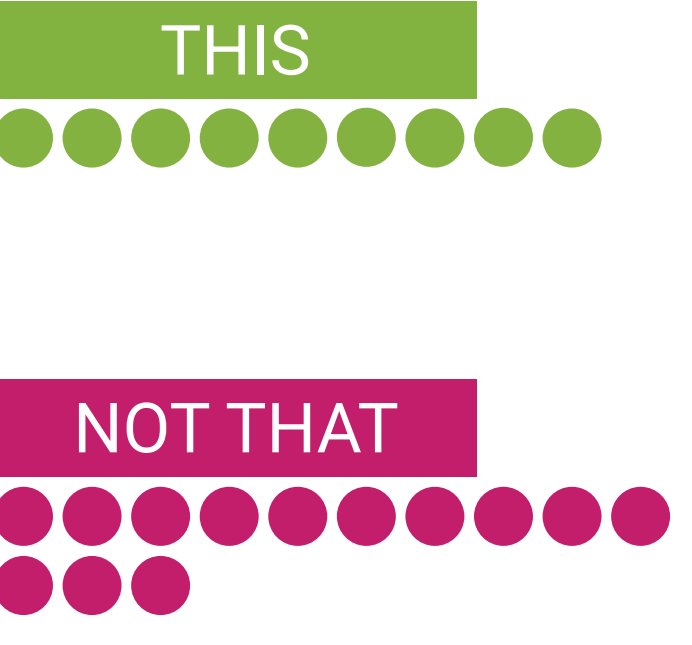
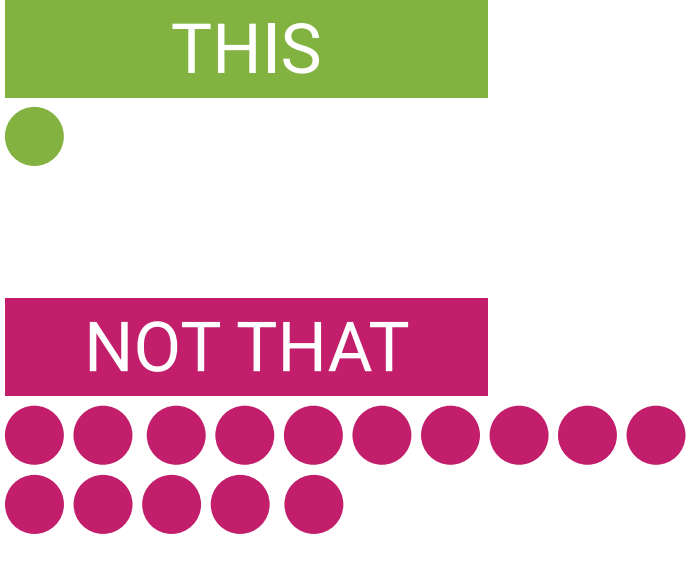
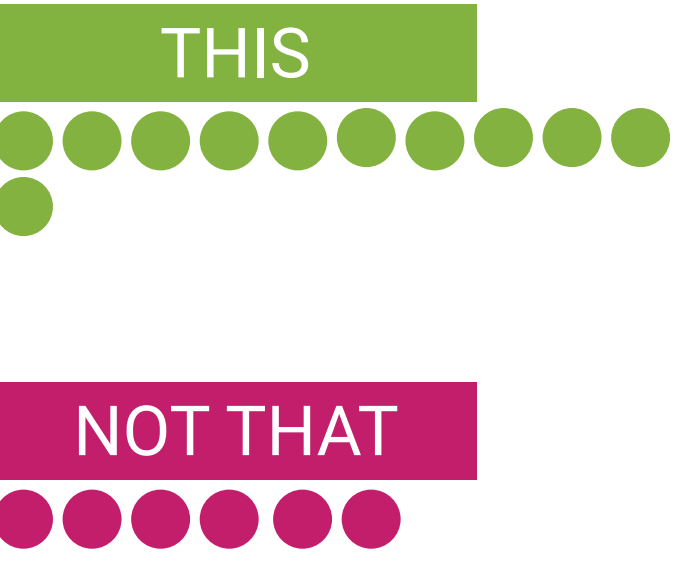
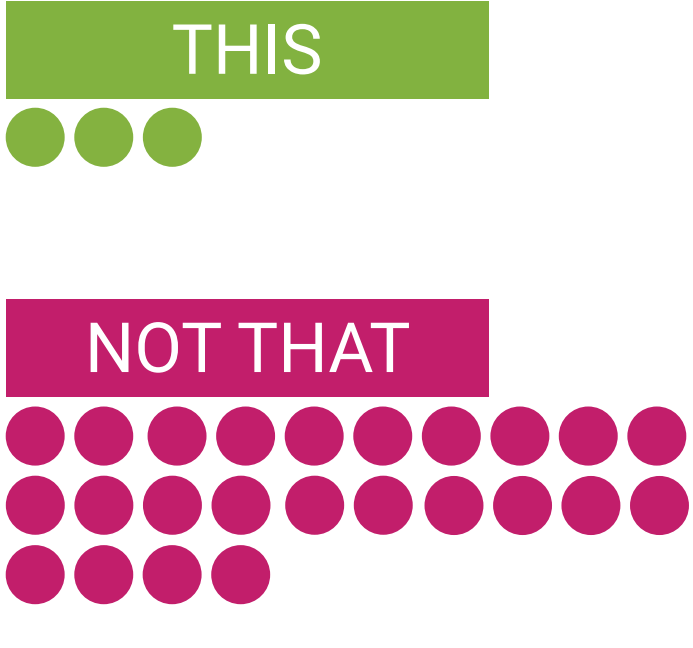
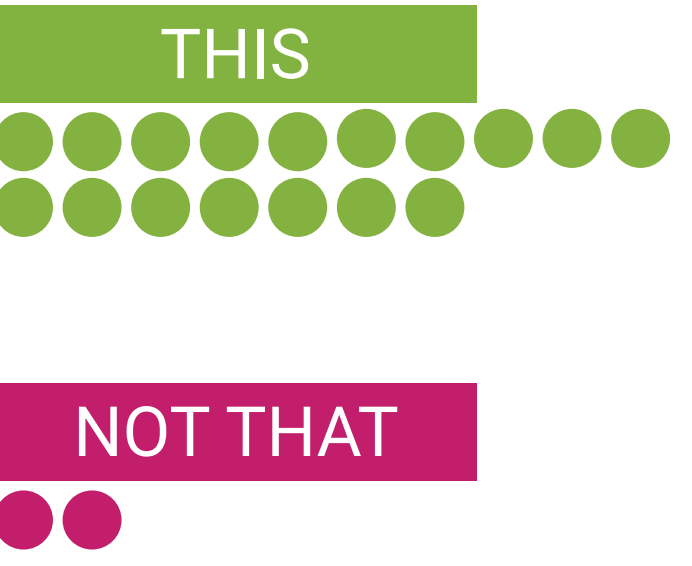
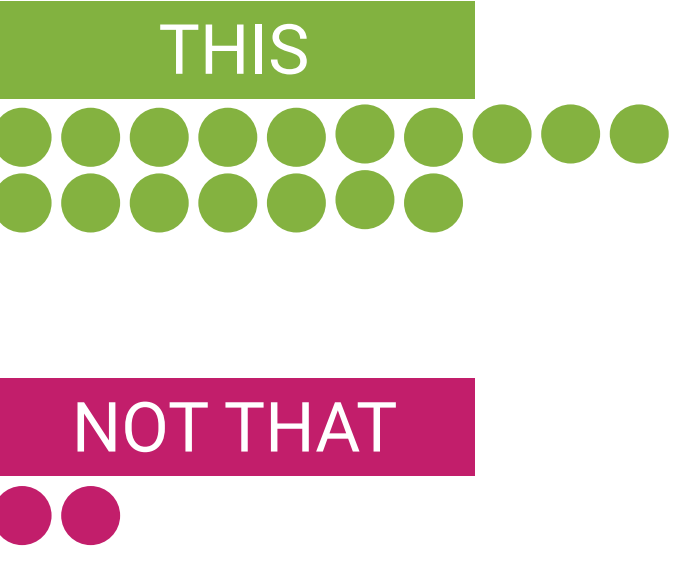
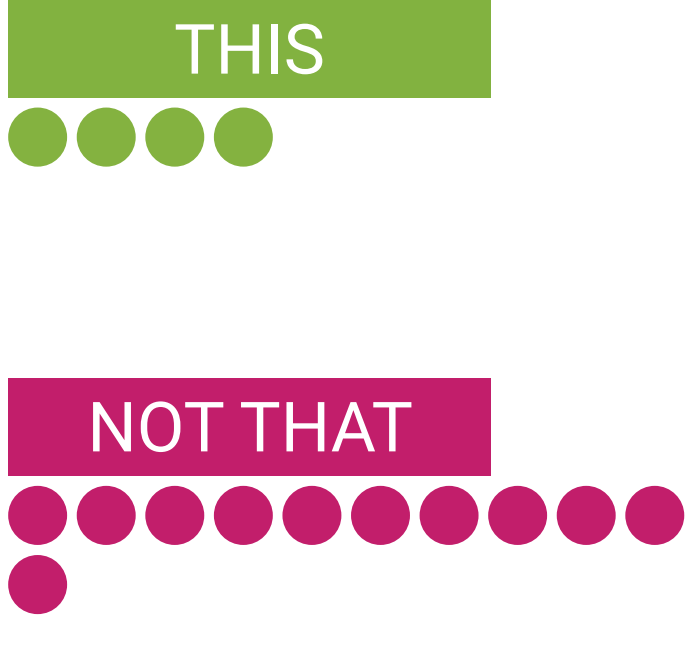
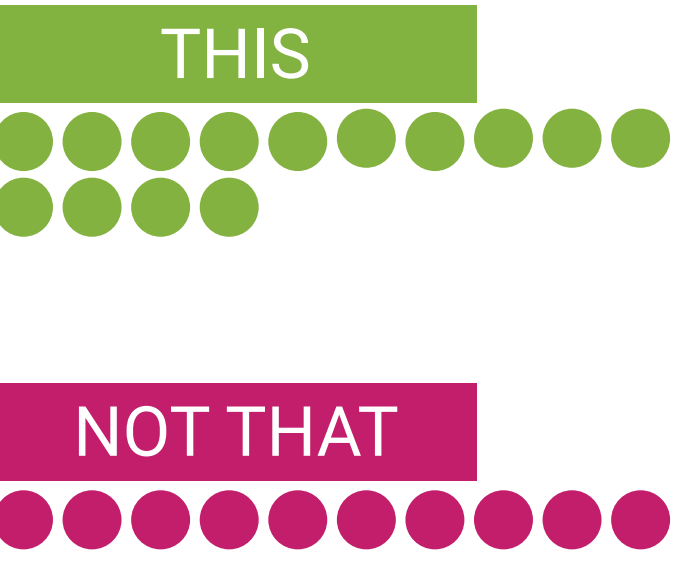
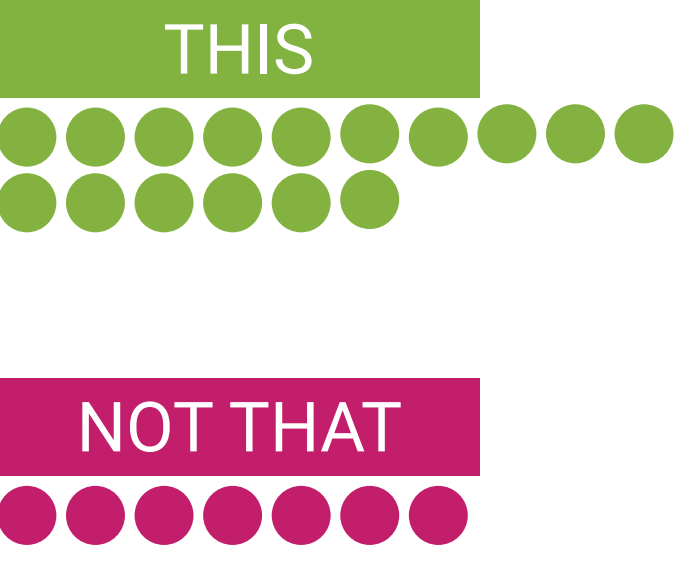
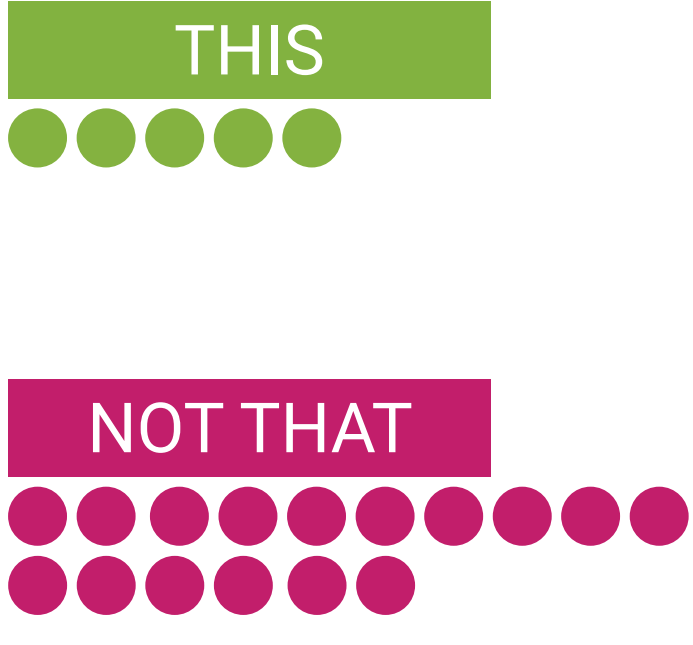
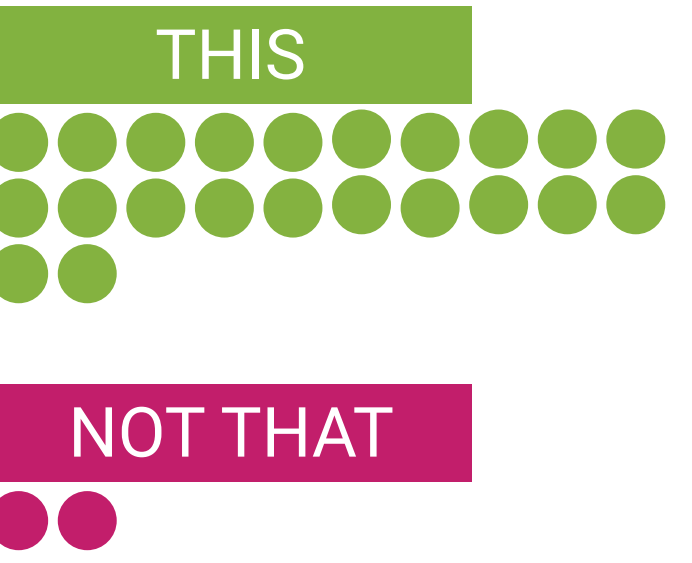
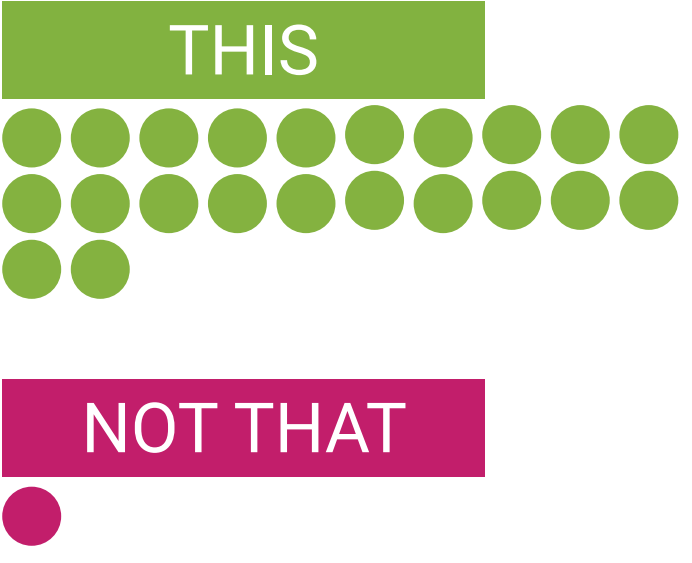
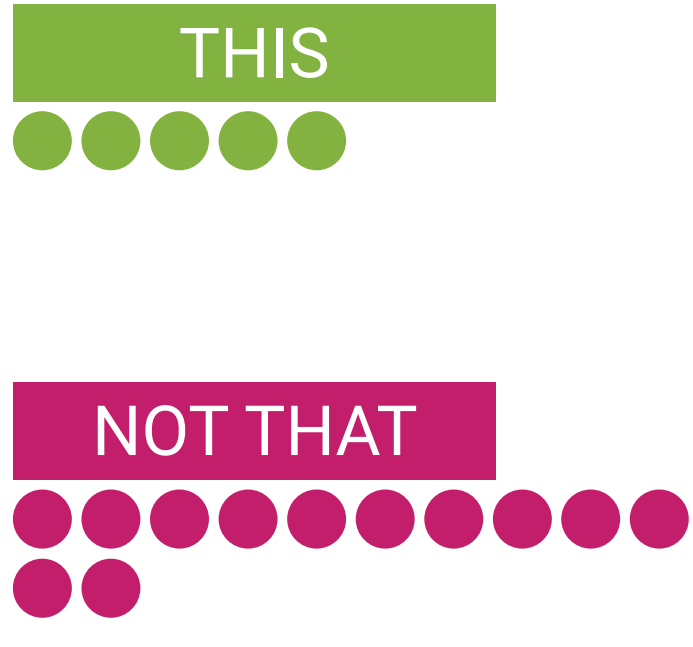
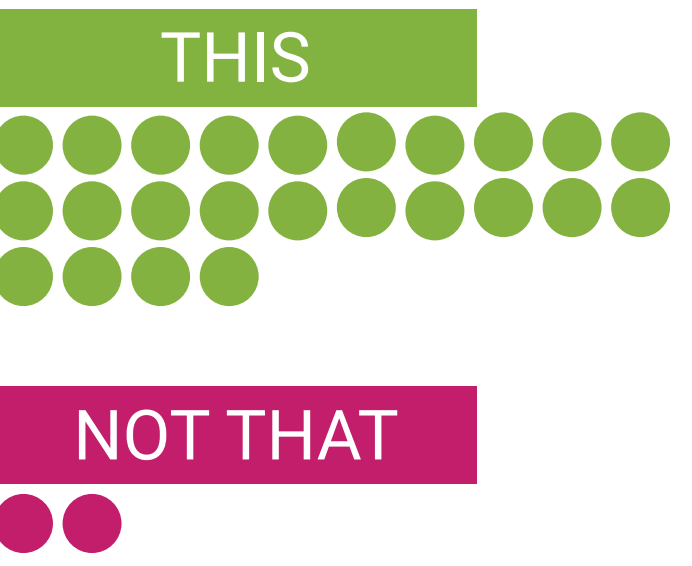
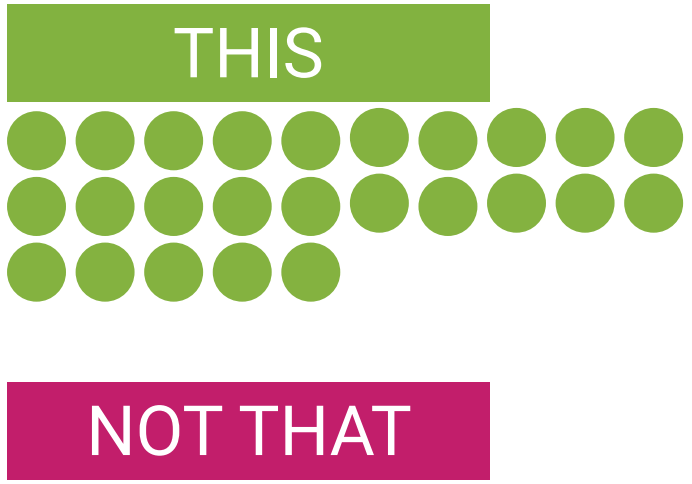
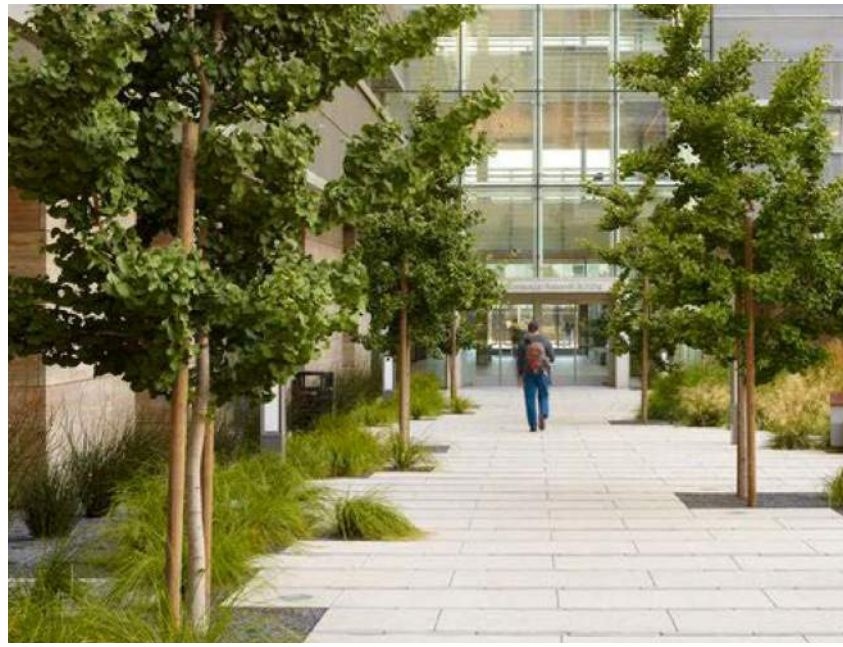
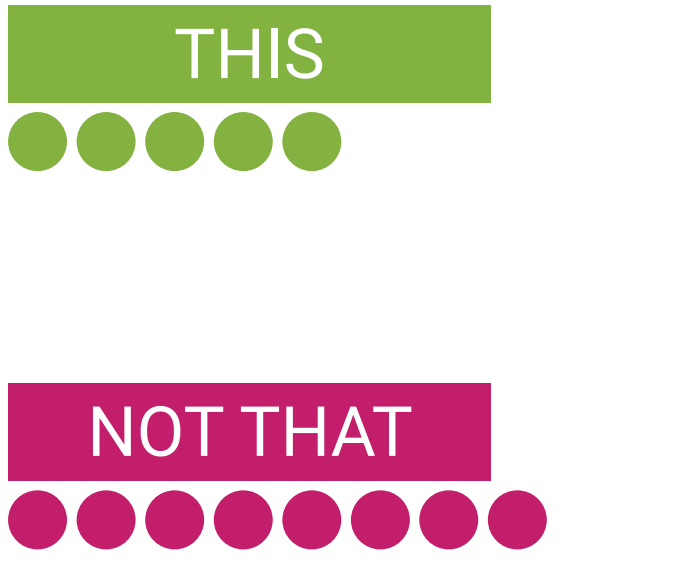
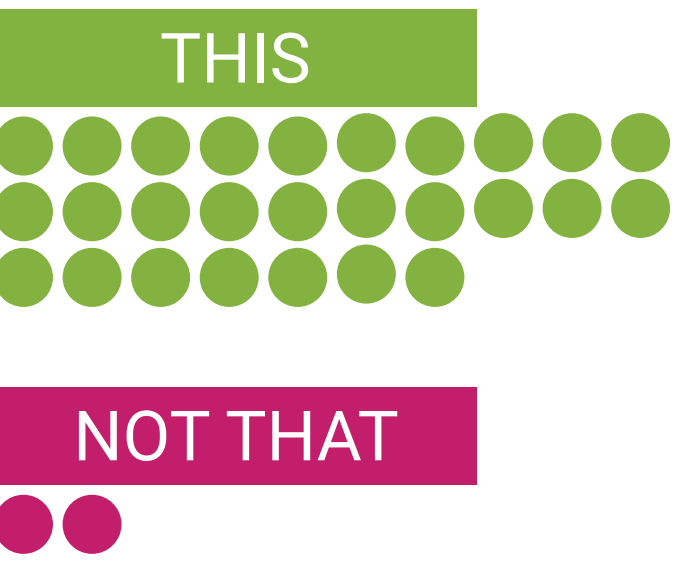
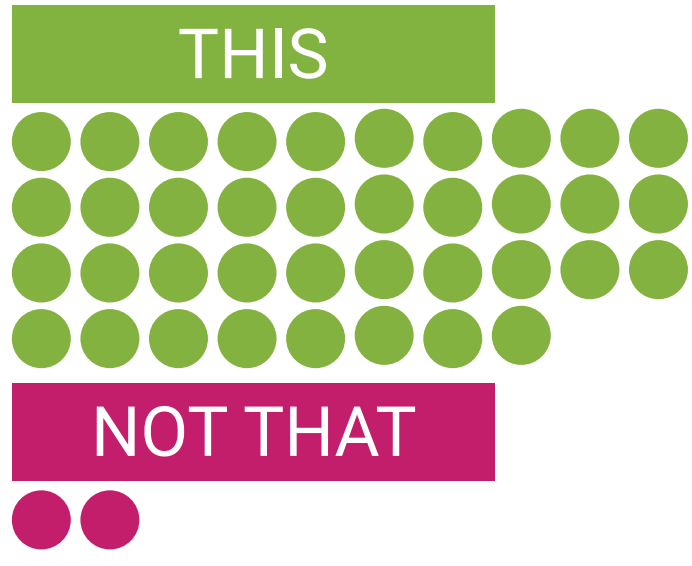
IDA B. WELLS HIGH SCHOOL MODERNIZATION

BORA

THIS/ NOT THAT ENGAGEMENT ACTIVITY

Participants were asked to put a green dot on any image that represents the project vision and a red dot on any image that does not represent the vision. These are the results of that exercise:

Add your own feedback by following the QR code here:



THIS/ NOT THAT ENGAGEMENT ACTIVITY

Participants were asked to put a green dot on any image that represents the project vision and a red dot on any image that does not represent the vision. These are the results of that exercise:

Add your own feedback by following the QR code here:

